

MLM Gelbvieh Great River Ranch

Open House - Private Treaty Sale

Hosted by

MLM Gelbvieh Great River Ranch
 Marlin Meyer Norman Pensoneau
 824 Road 3000 PO Box 349
 Superior, Neb. 68978 Chester, Ill. 62233
 402-879-4976 618-826-4846
 E-mail: mlm68978@yahoo.com
 Website: www.gelbviehbulls.com

Directions

Highway 14 and 136 junction north of Superior, Neb.,
 six miles west on 136, 1 1/4 miles north.

11 a.m. to 1 p.m.

Cattle viewing

Final bid at 1 p.m.

12:00 Noon

Lunch served

Discounts

\$30 per head for bulls picked up on day of sale.

Quantity Discount

2% - Two head

4% - Four head

3% - Three head

5% - Five or more head

Terms

When 1/2 of the total purchase price is paid at sale time,
 the balance will be carried forward interest-free until April 1.
 Total payment will be expected on bulls picked up sale day.

Delivery and Care Until April 1

Bulls purchased on sale day will be fed free of charge until
 April 1 at the purchaser's risk. Bulls may be fed after April 1
 at the cost of \$2.00 per head per day. We'd be happy to discuss
 delivery of your bulls with you.

Semen Check and Guarantee

Each bull has been semen checked by Dr. Thompson from
 the Animal Hospital in Superior, Neb., and guaranteed to
 settle healthy females.

2-Year-old Bulls

814U Gelbvieh MR 814U

Homozygous Black Polled Balancer® 50AN,50GV

G A R Precision 1680

Tattoo: MLM814U

KCF BENNETT K503 ET

KCF MISS HALLMARK G264

DOB:1/27/2008

Boyd New Day 8005

MLM MISS 637S

MLM MISS 155L

EPDs	CE	BW	WW	YW	MK	TM	GL	CEd	SC	ST	CW	RE	MB	DfF	CV	FM	
Ind.	108	-2.4	40	80	22	42	-1.1		.1		3	.06	.07	2.8	8.79	17.41	
		BW	WW	YW	Yr. Scrotal Circ			Yr. Pelvic Area			Gain Test	Base Price					
Act.		80	664	1056	35.9			196				\$2,000					
Adj.		Adj. Rib Fat		Adj. Rib Eye Area			Adj. % IM Fat										

- 1/2 Gelbvieh, 1/2 Angus
- Homozygous black, multiple polled
- Low birthweight with excellent growth
- 814 was used clean up on our heifers in 2009
- Tested AM free



Tenderness	4
Marbling	6
Percent choice	6
Yield grade	7
Ribeye area	4

895U Gelbvieh MR 895U

Homozygous Black Polled Balancer® 50AN, 50GV

SAF Strategy 9015

Tattoo: MLM895U

UI Strategy M025

Illini Maternal Miss C010

RTC ATLAS 712 G

DOB:2/27/08

MLM MISS 263M

MAG MISS BLK HILL 048 11E

EPDs	CE	BW	WW	YW	MK	TM	GL	CEd	SC	ST	CW	RE	MB	DfF	CV	FM	
Ind.		-.9	44	81	17	39	-.8		.2		1	.03	.01	2.7	.34	14.03	
		BW	WW	YW	Yr. Scrotal Circ			Yr. Pelvic Area			Gain Test	Base Price					
Act.		86	701	1154	36.6			204				\$2,000					
Adj.		Adj. Rib Fat		Adj. Rib Eye Area			Adj. % IM Fat										

- 1/2 Gelbvieh, 1/2 Angus
- Homozygous black, multiple polled
- Dam is a moderate framed Atlas daughter
- 113 ratio at weaning, 106 ratio at yearling



Tenderness	4
Marbling	7
Percent choice	7
Yield grade	6
Ribeye area	4

Yearling Bulls

9169W Gelbvieh MR 9169W

Black Polled Balancer®

63GV, 38AN

DFD MR LEGEND 517R

Tattoo: MLM 9169W

XXB PSICOSIS 234T

POPE 234M

DOB: 3/16/09


BT Traveler 166K

MLM MIS GRR 2196M

MLM MISS GRR 9621F

EPDs	CE	BW	WW	YW	MK	TM	GL	CEd	SC	ST	CW	RE	MB	DfF	CV	FM
Ind.	3.2	44	81	21	43	-5	0		-1	.04	.04	-4.0	7.07	14.03		
	BW	WW	YW	Yr. Scrotal Circ			Yr. Pelvic Area		Gain Test	Base Price						
Act.	96	741	1272	41.1			206		4.59	\$2,000						
Adj.	Adj. Rib Fat		Adj. Rib Eye Area			Adj. % IM Fat										
	.25		14.9			3.78										

- 5/8 Gelbvieh, 3/8 Angus
- Double black, double polled
- High growth bull to use on mature cows
- Above average for weaning, yearling, scrotal, pelvic, gain, ribeye area and marbling

 igenity.

Tenderness	3
Marbling	6
Percent choice	6
Yield grade	5
Ribeye area	5

2-Year-old Bulls

810U Gelbvieh

MR 810U

Red Polled Balancer®

50AR, 50GV

CEY BADLANDS MR. BEEF 805

Tattoo: MLM 810U

CEY BADLANDS ALL BEEF 114J

WMR RBRTS BELGA 5126

DOB: 1/26/08


MLM CHECKER 519E

MLM MISS 106L

MLM MISS 851H

EPDs	CE	BW	WW	YW	MK	TM	GL	CEd	SC	ST	CW	RE	MB	DfF	CV	FM
Ind.	2.5	46	80	18	41	-1.2					15	.16	.00	2.1	18.23	10.18
	BW	WW	YW	Yr. Scrotal Circ			Yr. Pelvic Area		Gain Test	Base Price						
Act.	96	715	1069	37.1			194			\$2,000						
Adj.	Adj. Rib Fat		Adj. Rib Eye Area			Adj. % IM Fat										

- 1/2 Gelbvieh, 1/2 Red Angus
- Red, double polled Balancer out of Badlands All Beef.
- * A 2-year-old bull that will add growth to your calves

 igenity.

Tenderness	7
Marbling	4
Percent choice	4
Yield grade	6
Ribeye area	5

First Breeding Season Guarantee

Buyers of all bulls injured during the first breeding season, will have credit at the next sale at the value of the purchase price minus salvage value. Contact MLM Gelbvieh promptly so the decision to return the bull to MLM Gelbvieh or to sell the bull by the buyer may be made. Breeding season is defined as the "90-day period following the first turnout of the bulls."

In the event of death of a bull during the first breeding season, a credit of 50% of the sale price will be applied at the next sale for a bull.

Bidding

Procedures for our Private Treaty Sale:

- When you have made your selections of bulls (prior to 1:00 p.m.) place your buyer's number on the card located on the pen for that lot or lots.

- At 1:00 p.m., the bulls with more than one buyer's number will be decided by private auction. The bulls with the most buyer numbers will be bid off first. The bidders will be announced.

- A deck of cards will be used to determine the order of bidding. Each bidder will select a card. The one with the highest card will own the bull IF the other bidders do not raise the bid on the base price. The person with the next highest card has the option to raise the price by \$50.00 if they desire. Every card holder will have a chance to raise the bid. This will continue until only one buyer remains, giving every buyer the same equal opportunity to buy any bull we have to offer.

- The unsuccessful bidders will have a few minutes to put their number on any other available bull. We recommend that you have your second choice in mind.

- The bid-offs will continue until all bulls having multiple bidders have been sold.

- If only one buyer number is on a bull - that person will own that bull at the base price listed.

- Bulls not sold on March 1 will be available for sale private treaty after that date.



The IGENITY® Profile: The IGENITY® provides the beef industry with the most comprehensive genetic profile of multiple traits of economic importance. The insights gained from an IGENITY® profile help producers make more confident selection, management and marketing decisions. The IGENITY® profile includes multiple-marker analyses for traits such as: Tenderness, Marbling, Quality grade, Yield grade, Hot carcass weight, Fat thickness, Ribeye area, Heifer pregnancy rate, Stayability, Calving ease and Docility.

Profile Score Advantages: To assist cattle producers in understanding the value of DNA technology, IGENITY® has developed a scoring system for each trait using a scale of 1 to 10. Higher values are not necessarily better—they simply indicate that the animal has the potential for more of that trait.

Marbling Score: Higher scores from IGENITY® for marbling equal greater genetic potential for marbling. In a group of animals with a score from IGENITY® of 10 for marbling, the average marbling score can be expected to be 161 points greater than animals with a score of 1. The USDA beef grading system for marbling uses a 100 to 999 point scale. Marbling points reflect how much intramuscular fat is present in each carcass and thus the potential to grade USDA Choice.

Tenderness: The analysis in the IGENITY® profile for tenderness represents an animal's genetic potential for tenderness as measured by Warner-Bratzler Shear Force (WBSF), with 10 being the most tender and 1 being the least tender. Lower shear force means more tender beef. In a group of animals with a score from IGENITY® of 10 for tenderness, 2.3 pounds less shear force is required than an animal with a score from IGENITY® of 1.

Ribeye Area: Higher scores from the IGENITY® profile reflect larger ribeye areas and lower scores reflect smaller ribeye areas. In a group of animals with a score from IGENITY® of 10 for

Yearling Bulls

9162W Gelbvieh MR 9162W

Homozygous Black Polled Balancer® 50AN,50GV

EGL Target 1148

Tattoo: MLM 9162W

EGL TENDERLOIN N407

EGL L280

DOB: 2/12/09

BT Stockman 385H

MLM MISS GRR 1164L

MLM MISS RIVER 3155C

EPDs	CE	BW	WW	YW	MK	TM	GL	CEd	SC	ST	CW	RE	MB	DfF	CV	FM	
Ind.	101	1.8	49	99	21	46	-5	100	.3		8	-.02	.19	-1.1	26.18	34.60	
		BW	WW	YW	Yr. Scrotal Circ			Yr. Pelvic Area			Gain Test	Base Price					
Act.		96	712	1343	39.1			162			4.01	\$2,000					
Adj.		Adj. Rib Fat		Adj. Rib Eye Area			Adj. % IM Fat										
		.32		16.7			3.77										

- 1/2 Gelbvieh, 1/2 Angus
- Homozygous black, multiple polled
- These Tenderloin sons definitely stand out
- Ratio of 107 at weaning, 113 at yearling
- Great EPDs with weaning and yearling in the top 3%
- The thickest bull of the group
- Above average scrotal, gain, ribeye area and marbling

Tenderness
 Marblin
 Percent choice
 Yield grade
 Ribeye area

9168W Gelbvieh MR 9168W

Homozygous Black Polled Balancer® 75AN, 25GV

SAF Strategy 9015

Tattoo: MLM 9168W

UI Strategy M025

Illini Maternal Miss C010

BT Stockman 385H

DOB: 3/13/09

MLM MISS GRR 1166L

WRCC MS PATRIOT 1 ET

EPDs	CE	BW	WW	YW	MK	TM	GL	CEd	SC	ST	CW	RE	MB	DfF	CV	FM	
Ind.	.7	47	93	19	43	-4			.1		4	.03	.05	.7	8.96	28.06	
		BW	WW	YW	Yr. Scrotal Circ			Yr. Pelvic Area			Gain Test	Base Price					
Act.		90	764	1269	41.0			199			4.87	\$1,800					
Adj.		Adj. Rib Fat		Adj. Rib Eye Area			Adj. % IM Fat										
		.38		16.1			4.07										

- 1/4 Gelbvieh, 3/4 Angus
- Homozygous black, multiple polled
- Will add pounds to your calf crop
- Ratio of 115 at weaning and 105 at yearling
- Highest gaining bull on test at 4.87 lbs. per day

Tenderness 6
 Marbling 6
 Percent choice 6
 Yield grade 6
 Ribeye area 6

Yearling Bulls

9153W Gelbvieh MR 9153W

Homozygous Black Polled Balancer® 50AN, 50GV

EGL Target 1148

Tattoo: MLM 9153W

EGL TENDERLOIN N407

EGL L280


DOB:2/2/09

UI Strategy M025

MLM MISS GRR 415P

MLM MISS IRON SPOT 617F

EPDs	CE	BW	WW	YW	MK	TM	GL	CEd	SC	ST	CW	RE	MB	DIF	CV	FM
Ind.	104	.3	46	97	16	39	-.2		.2		5	-.03	.17	-.8	20.23	35.35
		BW	WW	YW	Yr. Scrotal Circ			Yr. Pelvic Area		Gain Test	Base Price					
Act.		94	648	1297	40.3			190		4.26	\$2,000					
Adj.		Adj. Rib Fat		Adj. Rib Eye Area			Adj. % IM Fat									
		.30		14.9			4.16									



Tenderness	7
Marbling	6
Percent choice	6
Yield grade	6
Ribeye area	5

- 1/2 Gelbvieh, 1/2 Angus
- Homozygous black, multiple polled
- Excellent EPDs, top 5% for weaning and top 2% for yearling
- These Tenderloin sons grow. 9153 gained 4.26 lbs. per day on test

ribeye area, the average ribeye is expected to be 2.56 square inches larger than in a group of animals with a score of 1.

(Percent Choice (Quality Grade): Higher scores from IGENITY® for quality grade equal greater genetic potential to grade choice or higher. In a group of animals that possesses a score from IGENITY® of 8 for quality grade, it is likely that 50.1% will grade USDA Choice or higher.

Yield Grade: Higher scores from IGENITY® for yield grade equal a genetic potential for a higher USDA yield grade. Since higher yield grade values are a result of more fat and/or less muscle, animals with higher scores for yield grade are expected to be fatter and/or lighter muscled. A group of animals with a score from IGENITY® of 10 for yield grade can be expected to receive a yield grade that is 1.35 units of a grade higher (less favorable) than animals that receive a score of 1 from IGENITY®.

NR (No Result): Some samples may look normal when we submitted them, but still are unable to produce acceptable results. This often occurs due to contaminants that are undetectable to the naked eye: i.e. dirt, mold or other foreign matter. In many instances, a new sample has been submitted and results will be announced on sale day.

9154W Gelbvieh MR 9154W

Red Polled Percentage 88GV,12AN

JRI TOP SECRET 253M75ET

Tattoo: MLM 9154W

JRI TOP GRID 254T725

JRI MSEXTRAIMPRESSD254P625ET


DOB:2/02/09

RTC ATLAS 712G

MLM MISS GRR 2209M

MLM MISS GRR 0249K

EPDs	CE	BW	WW	YW	MK	TM	GL	CEd	SC	ST	CW	RE	MB	DIF	CV	FM
Ind.	107	-.3	39	77	18	38	-3.4	105	.5							14.25
		BW	WW	YW	Yr. Scrotal Circ			Yr. Pelvic Area		Gain Test	Base Price					
Act.		86	657	1205	25			36.8		196	3.95				\$1,800	
Adj.		Adj. Rib Fat		Adj. Rib Eye Area			Adj. % IM Fat									
		.12		14.7			2.62									



Tenderness	8
Marbling	5
Percent choice	5
Yield grade	7
Ribeye area	5

- 7/8 Gelbvieh, 1/8 Angus
- Red (diluter free), multiple polled
- Dam is an Atlas daughter with an excellent udder
- The Top Grid calves look good

How to use the IGENITY® Profile: IGENITY® scores are easy to incorporate into your selection criteria. They represent an additional tool when combined with EPDs, ultrasound and visual appraisal. As the case with any selection method, single trait selection should be avoided. Select those animals that best combine the traits you desire to emphasize in your herd. As an example, if you are trying to decide between two bulls-Bull A and Bull B- and Bull A has an IGENITY® profile score for Marbling of 8 and Bull B has a Marbling score of 7 and you prefer Bull B's EPDs and phenotype; then you can confidently select Bull B as his genetic potential is still in the direction you prefer.

Yearling Bulls

EPD DEFINITIONS IN THIS CATALOG

Calving Ease Direct (CE): An EPD that is expressed as a ratio, with a higher ratio representing better (easier) calving ease. This value represents the direct influence a sire has on calving ease. Only first-calf heifer data is included.

Birth Weight (BW): predicts the difference, in pounds, for birth weight.

Weaning Weight (WW): predicts the difference, in pounds for weaning weight (adjusted to age of dam and a standard 205 days of age). This is an indicator of growth from birth to weaning.

Yearling Weight (YW): predicts the expected difference, in pounds, for yearling weight (adjusted to standard 365 days of age). This is an indicator of growth from birth to yearling.

Milk (MK): The genetic ability of a sire's daughters to produce milk expressed in pounds of weaning weight.

Total Maternal (TM): a value that combines growth and milk information and a prediction of the weaning weight performance of calves from a sire's daughters. This value does not have an accompanying accuracy value.

Gestation Length (GL): this EPD is expressed in days and measures the days under or over normal gestation length a sire's daughters can be expected to calve.

Calving Ease Daughters (CED): an EPD expressed as a ratio for a sire's daughters' calving ease with a higher ration being a more favorable calving ease. This value represents the calving ease that a sire transmits to his daughters. Only first-calf daughters are considered in calculating the EPDs.

Scrotal Circumference (SC): value is expressed in centimeters of adjusted yearling scrotal circumference.

Carcass Weight (CW): expressed in pounds of carcass weight adjusted to a constant fat endpoint.

Rib Eye Area (RE): expressed in square inches of rib eye muscle area adjusted to a constant fat endpoint.

Marbling (MB): expressed in degrees of marbling score, a determinant of USDA quality

9101W Gelbvieh MR 9101W

Black Polled Percentage 88GV,12AN

DDF MR LEGEND 517R

Tattoo: MLM 9101W

XXB PSICOSIS 234T

POPE 234M

DOB: 3/9/2009

RTC ATLAS 712G

MLM MISS 450P

MLM MISS PREMIER 559E

EPDs	CE	BW	WW	YW	MK	TM	GL	CEd	SC	ST	CW	RE	MB	DIF	CV	FM
Ind.	106	1.8	47	77	18	42	.1	105	.3		-5	.05	-.04	-1.8	-13.96	4.70
		BW	WW	YW	Yr. Scrotal Circ			Yr. Pelvic Area		Gain Test	Base Price					
Act.		92	722	1159	35.4			185		2.70	\$1,800					
Adj.		Adj. Rib Fat		Adj. Rib Eye Area			Adj. % IM Fat									
		.24		15.5			3.37									

- 7/8 Gelbvieh, 1/8 Angus
- Double black, multiple polled
- A high percentage Gelbvieh bull with a lot of growth



Tenderness	4
Marbling	6
Percent choice	6
Yield grade	4
Ribeye area	5

9112W Gelbvieh MR 9112W

Homozygous Black Polled Balancer® 50AN, 50GV

S A F Strategy 9015

U I Strategy M025

Illini Maternal Miss C010

Tattoo: MLM 9112W

GKG MR BERETTA 006K

DOB: 3/29/09

MLM MISS 372N

MLM MISS 044K

EPDs	CE	BW	WW	YW	MK	TM	GL	CEd	SC	ST	CW	RE	MB	DIF	CV	FM
Ind.	1.2	51	92	18	44	-2.1		.3		5	.07	-.07	1.2	.36	21.63	
		BW	WW	YW	Yr. Scrotal Circ			Yr. Pelvic Area		Gain Test	Base Price					
Act.		84	777	1248	39.5			190		3.96	\$1,800					
Adj.		Adj. Rib Fat		Adj. Rib Eye Area			Adj. % IM Fat									
		.18		17.1			4.60									

- 1/2 Gelbvieh, 1/2 Angus
- Homozygous black, multiple polled
- Above average growth, ribeye area and marbling
- Dam is a Dam of Merit



Tenderness	6
Marbling	6
Percent choice	6
Yield grade	6
Ribeye area	5

Yearling Bulls

994W Gelbvieh MR 994W

Black Polled Balancer®

50AN, 50GV

SAF Strategy 9015

Tattoo: MLM 994W

UI Strategy M025

DOB:3/5/09


Illini Maternal Miss C010

BTI AMBROSE 2392A ET

MLM MISS ANBROSE 798G

DVM 539S

EPDs	CE	BW	WW	YW	MK	TM	GL	CEd	SC	ST	CW	RE	MB	DtF	CV	FM
Ind.		1.9	51	89	10	36	-.1		.0		5	.03	.01	-.6	6.12	17.21
		BW	WW	YW	Yr. Scrotal Circ		Yr. Pelvic Area		Gain Test	Base Price						
Act.		95	736	1193	3.06		190		3.06	\$1,800						
Adj.		Adj. Rib Fat		Adj. Rib Eye Area			Adj. % IM Fat									
		.24		14.5			4.32									

 igenity.

Tenderness 6
 Marbling 6
 Percent choice 6
 Yield grade 7
 Ribeye area 5

- 1/2 Gelbvieh, 1/2 Angus
- Double black, double polled
- 10% above average at weaning
- Top 2% for weaning and yearling EPDs

998W Gelbvieh MR 998W

Black Polled Purebred

PB94

EGL FOSTERS LO17 ET

Tattoo: MLM 998W

SEPT DANINCI ET


DOB:3/08/09

GATZ MISS TRENDSETTER 6JET

RTC ATLAS 712G

MLM MISS 255M

EPDs	CE	BW	WW	YW	MK	TM	GL	CEd	SC	ST	CW	RE	MB	DtF	CV	FM
Ind.	106	.5	49	73	19	44	-.7	106	.3		11	.14	-.12	3.2	2.41	-3.28
		BW	WW	YW	Yr. Scrotal Circ		Yr. Pelvic Area		Gain Test	Base Price						
Act.		85	725	1130	39.3		199		2.85	\$1,800						
Adj.		Adj. Rib Fat		Adj. Rib Eye Area			Adj. % IM Fat									
		.18		17.2			2.68									

 igenity.

Tenderness 4
 Marbling 6
 Percent choice 6
 Yield grade 6
 Ribeye area 3

- Purebred Gelbvieh
- Double black, double polled
- Excellent set of EPDs
- Largest ribeye of the group, at 17.2

Grade. Value is adjusted to a constant fat endpoint.

Days to Finish (DtF): expressed in days to reach a constant fat endpoint, which is commonly used in the feedlot to determine when an animal is finished with the appropriate amount of fat cover. When evaluating two potential sires with comparable EPDs for other traits, the sire with the lesser value of DtF will produce progeny that will finish sooner with potentially lower feed costs.

Feedlot Merit (FM): expressed in dollars per head, value passed to progeny. The Feedlot Merit EPD measures the dollar value associated with the expected gain and feedlot efficiency of progeny when fed in a "typical" feedlot arrangement.

Carcass Value (CV): expressed in dollar value per head, comparing progeny of one animal to another in dollar differences when progeny are sold on a grid. This value is a true economic comparison; it is not grid merit at a standard carcass weight as many breeds calculate. Projected carcass weight, penalties for "out" weight carcasses (too heavy or light), quality grade and yield grade premiums and discounts are all included in calculating this \$ EPD value.

American Gelbvieh Association

Jan. 2010 Gelbvieh
Average

Jan. 2010 Balancers®
Average

CE	105	CE	104
BW	1.3	BW	-0.1
WW	41	WW	35
YW	75	YW	74
MK	18	MK	17
TM	38	TM	35
GL	-1.4	GL	-1.1
CED	104	CED	102
SC	0.4	SC	0.3
ST	4	ST	4
CW	8.30	CW	7
RE	0.10	RE	0.08
MB	-0.03	MB	-0.02
DtF	3.5	DtF	3.2
CV	6.74	CV	10.13
FM	8.82	FM	13.89

Yearling Bulls

902W Gelbvieh MR 902W

Homozygous Black Polled Balancer® 50AN, 50GV

S A F Focus of E R

Tattoo: MLM902W

Mytty in Focus

Mytty Countess 906

JBOB 3303K ET

DOB:1/19/09

MLM MISS 703T

MLM MISS 5101R

EPDs	CE	BW	WW	YW	MK	TM	GL	CEd	SC	ST	CW	RE	MB	DfF	CV	FM
Ind.	103	-2.6	39	75	23	43	-2.3	101	.4		11	.17	-.04	.6	10.70	11.35
		BW	WW	YW	Yr. Scrotal Circ		Yr. Pelvic Area		Gain Test	Base Price						
Act.		72	695	1103	41.6		186		2.42	\$1,800						
Adj.		Adj. Rib Fat	Adj. Rib Eye Area		Adj. % IM Fat											
		.21	13.4		3.18											



- 1/2 Gelbvieh, 1/2 Angus
- Homozygous black & multiple polled
- In Focus son out of a 1st calf heifer
- 72-lb birthweight and had a weaning weight ratio of 104

Tenderness	3
Marbling	8
Percent choice	8
Yield grade	7
Ribeye area	6

Yearling Bulls

976W Gelbvieh MR 976W

Homozygous Black Polled Balancer® 50AN, 50 GV

S A F Strategy 9015

Tattoo: MLM 976W

U I Strategy M025

Illini Maternal Miss C010

BTI EGAN 2105H

DOB:2/22/09

MLM MISS 454P

MLM MISS 920J

EPDs	CE	BW	WW	YW	MK	TM	GL	CEd	SC	ST	CW	RE	MB	DfF	CV	FM
Ind.		2.0	58	103	12	41	-1.3		.6		-2	-2	-.01	.8	-3.89	29.35
		BW	WW	YW	Yr. Scrotal Circ		Yr. Pelvic Area		Gain Test	Base Price						
Act.		95	750	1245	37.9		195		3.29	\$1,800						
Adj.		Adj. Rib Fat	Adj. Rib Eye Area		Adj. % IM Fat											
		.26	13.9		2.93											



- 1/2 Gelbvieh, 1/2 Angus
- Homozygous black, multiple polled
- High growth bull out of Angus herdsire, a Strategy son

Tenderness	6
Marbling	5
Percent choice	5
Yield grade	6
Ribeye area	4

909W Gelbvieh MR 909W

Red Polled Balancer® 50AR, 50GV

BUF BFCK Cherokee CNYN 4912

Tattoo: MLM 909W

HXC LCC Cheyenne B221L

HXC HXC 701G

JRI PLD FREE AGENT 125J3

DOB:1/25/09

MLM MISS 216M

MLM MISS 851H

EPDs	CE	BW	WW	YW	MK	TM	GL	CEd	SC	ST	CW	RE	MB	DfF	CV	FM
Ind.	104	-2.0	37	81	19	38	-2.5	101	.7		6	.07	.00	5.0	8.10	22.55
		BW	WW	YW	Yr. Scrotal Circ		Yr. Pelvic Area		Gain Test	Base Price						
Act.		82	645	1163	40.5		191		4.06	\$2,000						
Adj.		Adj. Rib Fat	Adj. Rib Eye Area		Adj. % IM Fat											
		.40	13.8		3.99											



- 1/2 Gelbvieh, 1/2 Red Angus
- Red & multiple polled son of Cheyenne
- Dam has an average calving interval of 369 days with her 5 calves

Tenderness	6
Marbling	4
Percent choice	4
Yield grade	5
Ribeye area	6

993W Gelbvieh MR 993W

Homozygous Black Polled Balancer® 75GV, 25AN

PMG MAXUM 22M

Tattoo: MLM 993W

SEPT KIT N CABODAL S82E

GNG Kelly 14Z

Summitcrest Hi Flyer 3B18

DOB: 3/05/09

MLM MISS 515R

MLM MISS 311

EPDs	CE	BW	WW	YW	MK	TM	GL	CEd	SC	ST	CW	RE	MB	DfF	CV	FM
Ind.	102	1.0	43	74	19	41	-.9	98	.5							5.15
		BW	WW	YW	Yr. Scrotal Circ		Yr. Pelvic Area		Gain Test	Base Price						
Act.		98	722	1201	178		3.67		\$1,800							
Adj.		Adj. Rib Fat	Adj. Rib Eye Area		Adj. % IM Fat											
		.19	15.9		3.24											



- 3/4 Gelbvieh, 1/4 Angus
- Homozygous black, multiple polled
- High growth bull, ratio of 108 at weaning
- Ribeye area of 15.9

Tenderness	
Marbling	
Percent choice	
Yield grade	
Ribeye area	

Yearling Bulls

968W Gelbvieh MR 968W

Red Polled Balancer®

75GV, 25AN

XXB TITUS 880K
XXB BIG N' RICH 922P ET
EGL G565
BT Stockman 385H

Tattoo: MLM 968W

DOB:2/18/09

MLM MISS 217M

MLM MISS EDITION 790G

EPDs	CE	BW	WW	YW	MK	TM	GL	CEd	SC	ST	CW	RE	MB	DtF	CV	FM
Ind.	103	1.4	44	89	20	42	-1	103	.6		13	-.06	-.06	6.6	11.81	25.80
		BW	WW	YW	Yr. Scrotal Circ			Yr. Pelvic Area			Gain Test	Base Price				
Act.		92	706	1306	39.8			179			3.98	\$2,000				
Adj.		Adj. Rib Fat		Adj. Rib Eye Area			Adj. % IM Fat									
		.22		15.0			3.78									



Tenderness 3
Marbling 4
Percent choice 4
Yield grade 6
Ribeye area 5

- 3/4 Gelbvieh, 1/4 Angus
- Red (diluter free), multiple polled
- Ratio of 106 at weaning and 110 at yearling
- High growth bull, top 10% for both weaning and yearling EPDs
- Big ribeye of 15.0
- Dam is a Dam of Merit

Yearling Bulls

912W Gelbvieh MR 912W

Red Polled Purebred

GV

JDPD ROLEX 151M
JDPD ASTRO 407S
HAD PRINCESS OF ALOT 407P
SLC FREEDOM 178F ET

Tattoo: MLM912W

DOB:1/27/09

MLM MISS 102L

MLM MISS 962J

EPDs	CE	BW	WW	YW	MK	TM	GL	CEd	SC	ST	CW	RE	MB	DtF	CV	FM
Ind.	104	.5	36	61	18	36	-3.3	105	6	8	.11	-.13	3.5	-2.07	-4.95	
		BW	WW	YW	Yr. Scrotal Circ			Yr. Pelvic Area			Gain Test	Base Price				
Act.		90	655	1128	39.1			196			3.50	\$2,000				
Adj.		Adj. Rib Fat		Adj. Rib Eye Area			Adj. % IM Fat									
		.21		13.6			2.66									



Tenderness 3
Marbling 4
Percent choice 4
Yield grade 7
Ribeye area 3

- Red, multiple polled
- Purebred son of Astro
- Dam is a dam of Merit
- A thick, wide top, well-muscled bull

972W Gelbvieh MR 972W

Homozygous Black Polled Balancer®

50AN, 50GV

B/R NEW DESIGN 036
BON View New Design 878
Bon View Gammer 85
CTRG LIMITED EDITION 411D1

Tattoo: MLM 972W

DOB:2/20/09

MLM MISS 986J

MAG MISS BLACK MAG 050 23F

EPDs	CE	BW	WW	YW	MK	TM	GL	CEd	SC	ST	CW	RE	MB	DtF	CV	FM
Ind.	105	-1.6	34	71	26	43	-6	103	.3		4	.05	.13	9.5	15.20	11.57
		BW	WW	YW	Yr. Scrotal Circ			Yr. Pelvic Area			Gain Test	Base Price				
Act.		86	688	1121	39.8			187			3.29	\$2,000				
Adj.		Adj. Rib Fat		Adj. Rib Eye Area			Adj. % IM Fat									
		.24		14.8			3.93									



Tenderness 7
Marbling 8
Percent choice 8
Yield grade 6
Ribeye area 5

- 1/2 Gelbvieh, 1/2 Angus
- Homozygous black, multiple polled
- Dam is a Limited Edition daughter and is a Dam of Distinction

914W Gelbvieh MR 914W

Homozygous Black Polled Balancer®

50AN, 50GV

SAF Focus of E R
Mytty in Focus
Mytty Countess 906
GKG MR FOSTERS 327N

Tattoo: MLM 914W

DOB:1/28/09

MLM MISS 7104T

MLM MISS 102L

EPDs	CE	BW	WW	YW	MK	TM	GL	CEd	SC	ST	CW	RE	MB	DtF	CV	FM
Ind.	106	-.9	46	89	20	43	-2.9	103	.2		12	.17	-.02	.2	14.36	23.22
		BW	WW	YW	Yr. Scrotal Circ			Yr. Pelvic Area			Gain Test	Base Price				
Act.		85	652	1156	40.4			173			3.60	\$2,000				
Adj.		Adj. Rib Fat		Adj. Rib Eye Area			Adj. % IM Fat									
		.34		11.9			4.12									



Tenderness 3
Marbling NR
Percent choice NR
Yield grade 5
Ribeye area 5

- 1/2 Gelbvieh, 1/2 Angus
- Homozygous black, multiple polled
- Sired by the popular Angus bull, Mytty in Focus and a 1st calf heifer

Yearling Bulls

916W Gelbvieh MR 916W

Black Polled Balancer®

75GV, 25AN

JRI TOP SECRET 253M75 ET

Tattoo: MLM 916W

JRI TOP GRID 254T725

JRI MSEXTRAIMPRESSD254P625ET

DOB:1/29/09

Larks Canyon 74D4

MLM MISS 403P

MLM MISS 242M

EPDs	CE	BW	WW	YW	MK	TM	GL	CEd	SC	ST	CW	RE	MB	DfF	CV	FM	
Ind.	106	-6	39	76	16	36	-2.7	105	.5							12.80	
		BW	WW	YW	Yr. Scrotal Circ			Yr. Pelvic Area			Gain Test	Base Price					
Act.		87	680	1174	38.1			175			3.43	\$2,000					
Adj.		Adj. Rib Fat		Adj. Rib Eye Area			Adj. % IM Fat										
		.28		14.3			2.57										



Tenderness 7
 Marbling 6
 Percent choice 6
 Yield grade 6
 Ribeye area 5

- 3/4 Gelbvieh, 1/4 Angus
- Double black, multiple polled
- Out of one of our top Balancer® cows, a Larks Canyon daughter

917W Gelbvieh MR 917W

Homozygous Black Polled Balancer®

50AN, 50GV

B/R New Design 036

Bon View New Design 878

Tattoo: MLM 917W

Bon View Gammer 85

BTI EGAN 2105H

DOB:1/29/09

MLM MISS 264M

MLM MISS 844H

EPDs	CE	BW	WW	YW	MK	TM	GL	CEd	SC	ST	CW	RE	MB	DfF	CV	FM	
Ind.	102	-2	40	85	20	40	-7	102	.4		8	.11	.13	7.2	22.23	24.79	
		BW	WW	YW	Yr. Scrotal Circ			Yr. Pelvic Area			Gain Test	Base Price					
Act.		85	671	1190	43.6			179			3.85	\$2,000					
Adj.		Adj. Rib Fat		Adj. Rib Eye Area			Adj. % IM Fat										
		.23		13.7			2.82										



Tenderness 7
 Marbling 7
 Percent choice 7
 Yield grade 6
 Ribeye area 4

- 1/2 Gelbvieh, 1/2 Angus
- Homozygous black, multiple polled
- Dam is a dam of Merit with calving interval of 369 days

Yearling Bulls

959W Gelbvieh MR 959W

Homozygous Black Polled Purebred

GV

XXB TITUS 880K

Tattoo: MLM 959W

XXB BIG N' RICH 911P ET

EGL G565

DOB:2/14/09

FHG FLYING H EXTRA 150D

MLM MISS 037K

MLM MISS 837H

EPDs	CE	BW	WW	YW	MK	TM	GL	CEd	SC	ST	CW	RE	MB	DfF	CV	FM	
Ind.	104	1.0	38	78	14	33	0	102	.4		7	.00	-.10	6.6	.24	16.92	
		BW	WW	YW	Yr. Scrotal Circ			Yr. Pelvic Area			Gain Test	Base Price					
Act.		90	632	1237	38.6			185			4.32	\$2,000					
Adj.		Adj. Rib Fat		Adj. Rib Eye Area			Adj. % IM Fat										
		.19		13.8			3.41										



Tenderness 1
 Marbling 6
 Percent choice 6
 Yield grade 7
 Ribeye area 5

- Purebred Gelbvieh son of Big N Rich
- Homozygous black, multiple polled
- Dam is a moderate framed Extra 150D daughter
- Easy keeping, thick, moderate framed bull that gained 4.32 lbs. per day on test

962W Gelbvieh MR 962W

Red Polled Balancer®

50AR, 50GV

BUF BFCK CHEROKEE CNYN 4912

Tattoo: MLM 962W

HXC LCC CHEYENNE B221L

HXC HXC 701G

DOB: 2/15/09

CTRG LIMITED EDITION 411D1

MLM MISS 467P

MLM MISS 043K

EPDs	CE	BW	WW	YW	MK	TM	GL	CEd	SC	ST	CW	RE	MB	DfF	CV	FM	
Ind.	108	-3.4	35	78	22	40	-1.8	105	.4		7	.13	.04	5.4	13.18	20.57	
		BW	WW	YW	Yr. Scrotal Circ			Yr. Pelvic Area			Gain Test	Base Price					
Act.		80	657	1239	41.2			200			4.23	\$2,000					
Adj.		Adj. Rib Fat		Adj. Rib Eye Area			Adj. % IM Fat										
		.28		13.8			3.42										



Tenderness 6
 Marbling 6
 Percent choice 6
 Yield grade 6
 Ribeye area 5

- 1/2 Gelbvieh, 1/2 Red Angus
- Red, multiple polled
- A calving ease bull, top 5% for birthweight and top 10% for calving ease
- Big scrotal, big pelvic and big gain

Yearling Bulls

955W Gelbvieh MR 955W

Homozygous Black Polled Balancer® 50AN,50GV

B/R New Design 036

Tattoo: MLM 955W

Bon View New Design 878

Bon View Gammer 85

DOB: 2/12/09

GKG MR BERETTA 006K

MLM MISS 311N

MLM MISS 087K

EPDs	CE	BW	WW	YW	MK	TM	GL	CEd	SC	ST	CW	RE	MB	DfF	CV	FM
Ind.	105	.3	41	83	23	44	-1.3	102	.4		5	.07	.11	6.9	15.61	20.60
		BW	WW	YW	Yr. Scrotal Circ		Yr. Pelvic Area		Gain Test	Base Price						
Act.		92	689	1242	40.1		192		3.67	\$2,000						
Adj.		Adj. Rib Fat		Adj. Rib Eye Area		Adj. % IM Fat										
		.19		13.9		4.94										



- 1/2 Gelbvieh, 1/2 Angus
- Homozygous black, multiple polled
- Above average at weaning and yearling
- Highest marbling score of the group
- Dam is a Dam of Merit

Tenderness	4
Marbling	7
Percent choice	7
Yield grade	5
Ribeye area	4

Yearling Bulls

927W Gelbvieh MR 927W

Red Polled Purebred

GV

JDPD ROLEX 151M

Tattoo: MLM927W

JDPD ASTRO 407S

HAD PRINCESS OF ALOT 407P

DOB: 2/02/09

MLM MR 220M

MLM MISS 461L

MLM MISS 962J

EPDs	CE	BW	WW	YW	MK	TM	GL	CEd	SC	ST	CW	RE	MB	DfF	CV	FM
Ind.	103	1.3	37	61	20	39	-2.2	104	.5		7	.07	-.08	2.9	.34	-6.10
		BW	WW	YW	Yr. Scrotal Circ		Yr. Pelvic Area		Gain Test	Base Price						
Act.		88	668	1153	38.3		176		3.70	\$2,000						
Adj.		Adj. Rib Fat		Adj. Rib Eye Area		Adj. % IM Fat										
		.16		15.3		2.41										



- Red, multiple polled purebred son of Astro
- Dam is a Dam of Merit, out of 41,318 active cows in the Gelbvieh breed only 5.5 qualified as dam of Merit's

Tenderness	1
Marbling	5
Percent choice	5
Yield grade	6
Ribeye area	4

956W Gelbvieh MR 956W

Black Polled Balancer®

50AN,50GV

EGL Target 1148

Tattoo: MLM 956W

EGL TENDERLOIN N407

EGL L280

DOB: 2/12/09

UI New Design N080

MLM MISS 680S

MLM MISS KITTY 447D

EPDs	CE	BW	WW	YW	MK	TM	GL	CEd	SC	ST	CW	RE	MB	DfF	CV	FM
Ind.	108	-1.2	44	94	19	41	-1.8	104	.2		4	-.04	.19	.6	20.25	33.32
		BW	WW	YW	Yr. Scrotal Circ		Yr. Pelvic Area		Gain Test	Base Price						
Act.		80	726	1348	40.9		179		4.46	\$2,000						
Adj.		Adj. Rib Fat		Adj. Rib Eye Area		Adj. % IM Fat										
		.22		15.7		4.52										



- 1/2 Gelbvieh, 1/2 Angus
- Double black, multiple polled
- This bull has it all, below average birthweight, 726 lbs. weaning, 1,348 lbs. yearling, 4.46 lbs per day gain on test, scrotal of 40.9, ribeye area of 15.7 and a marbling score of 4.52

Tenderness	7
Marbling	7
Percent choice	7
Yield grade	7
Ribeye area	5

930W Gelbvieh MR 930W

Homozygous Black Polled Balancer®

50AN, 50GV

S A F Focus E R

Mytty In Focus

Mytty Countess 906

Tattoo: MLM 930W

BTI EGAN 2105H

DOB: 2/3/09

MLM MISS 361N

EPDs	CE	BW	WW	YW	MK	TM	GL	CEd	SC	ST	CW	RE	MB	DfF	CV	FM
Ind.	106	-2.8	36	77	17	35	-2.3	103	.5		5	.08	.00	-.3	6.07	17.88
		BW	WW	YW	Yr. Scrotal Circ		Yr. Pelvic Area		Gain Test	Base Price						
Act.		80	620	1141	40.3		184		4.04	\$1,800						
Adj.		Adj. Rib Fat		Adj. Rib Eye Area		Adj. % IM Fat										
		.28		11.6		3.16										



- 1/2 Gelbvieh, 1/2 Angus
- Homozygous black, double polled
- A son of the popular Angus bull, Mytty in Focus
- A low birthweight bull that gained 4.04 lbs. per day on test

Tenderness	3
Marbling	6
Percent choice	6
Yield grade	6
Ribeye area	5

Yearling Bulls

933W Gelbvieh MR 933W


Homozygous Black Polled Purebred GV

FHG VVFG FLYING H EXCLUSIVE Tattoo: MLM 933W
OZZ EXT GOVENOR 3N

OZZ CHA MICHELL 74L DOB: 2/04/09
 BTI EXTRA 2106K ET

MLM MISS 633S
 MLM MISS812H

EPDs	CE	BW	WW	YW	MK	TM	GL	CEd	SC	ST	CW	RE	MB	DfF	CV	FM
Ind.	107	-1.1	40	75	18	38	-2.8	108	.5		5	.05	.04	3.1	8.65	10.15
		BW	WW	YW	Yr. Scrotal Circ			Yr. Pelvic Area		Gain Test	Base Price					
Act.		78	649	1113	37.6			178		3.87	\$1,800					
Adj.		Adj. Rib Fat		Adj. Rib Eye Area			Adj. % IM Fat									
		.11		13.4			2.85									

 igenity.

Tenderness 3
 Marbling 7
 Percent choice 7
 Yield grade 8
 Ribeye area 5

- Purebred Gelbvieh, son of Govenor
- Homozygous black, multiple polled
- Low birthweight bull, the Govenor calves come easy and have plenty of growth
- 3/4 brother to Lot 942

937W Gelbvieh MR 937W


Black Polled Balancer® 75GV, 25AN

ELG NORTHERN WIND P068 ET Tattoo: MLM 937W
EGL OLD IRON NUTS S842

EGL Miss Improvement 3266 DOB: 2/7/2009
 CTRG LIMITED EDITION 411D1

MLM MISS EDITION 829H
 MLM MISS IRON SPOT 659F

EPDs	CE	BW	WW	YW	MK	TM	GL	CEd	SC	ST	CW	RE	MB	DfF	CV	FM
Ind.	104	1.3	46	77	24	47	-6	104	.4		12	.09	.00	3.6	14.20	5.88
		BW	WW	YW	Yr. Scrotal Circ			Yr. Pelvic Area		Gain Test	Base Price					
Act.		88	703	1205	39.4			178		3.32	\$1,800					
Adj.		Adj. Rib Fat		Adj. Rib Eye Area			Adj. % IM Fat									
		.14		14.0			2.30									

 igenity.

Tenderness 4
 Marbling 6
 Percent choice 6
 Yield grade 5
 Ribeye area 4

- 3/4 Gelbvieh, 1/4 Angus
- Multiple black, double polled
- Ratio of 105 at weaning and 102 at yearling
- The Iron Nuts sons are thick and moderate
- Dam is a Dam of Distinction. Only 0.7% of the active cows in the Gelbvieh breed qualify for this distinction.

Yearling Bulls

951W Gelbvieh MR 951W


Red Polled Balancer® 50AR,50GV

BUF BFCK CHEROKEE CNYN 4912 Tattoo: MLM 951W
HXC LCC CHEYENNE B221L

HXC HXC 701G DOB: 2/10/09
 MLM CHECKER 519E

MLM MISS 962J
 MLM MISS HORIZON 422D

EPDs	CE	BW	WW	YW	MK	TM	GL	CEd	SC	ST	CW	RE	MB	DfF	CV	FM
Ind.	105	-1.3	35	70	22	40	-1.4	103	.8		9	.19	.04	3.0	15.22	8.93
		BW	WW	YW	Yr. Scrotal Circ			Yr. Pelvic Area		Gain Test	Base Price					
Act.		82	655	1131	38.5			192		3.23	\$1,800					
Adj.		Adj. Rib Fat		Adj. Rib Eye Area			Adj. % IM Fat									
		.28		14.6			2.34									

 igenity.

Tenderness 6
 Marbling 5
 Percent choice 5
 Yield grade 8
 Ribeye area 5

- 1/2 Gelbvieh, 1/2 Red Angus
- Red and double polled son of Cheyenne
- Powerful, well muscled Balancer®

954W Gelbvieh MR 954W


Homozygous Black Scurred Purebred GV

JEB POLLED GIZMO 17Z Tattoo: MLM 954W
SPUR BERETTA 703G

SPUR VANESSA 19E ET DOB: 2/12/09
 RAG MR EXTRA WONDERFUL ET

MLM MISS 323N
 MLM MISS 053K

EPDs	CE	BW	WW	YW	MK	TM	GL	CEd	SC	ST	CW	RE	MB	DfF	CV	FM
Ind.	100	2.3	38	66	21	40	-2.1	103	.4	7	10	.15	-.24	1.6	-8.41	-29
		BW	WW	YW	Yr. Scrotal Circ			Yr. Pelvic Area		Gain Test	Base Price					
Act.		95	654	1157	39.6			186		3.96	\$1,800					
Adj.		Adj. Rib Fat		Adj. Rib Eye Area			Adj. % IM Fat									
		.16		13.7			2.66									

 igenity.

Tenderness 3
 Marbling 5
 Percent choice 5
 Yield grade 5
 Ribeye area 5

- Purebred son of Beretta
- Homozygous black, multiple polled with scurs

Yearling Bulls

944W Gelbvieh MR 944W

Homozygous Black Polled Balancer® 50AN, 50GV

B/R New Design 036

Tattoo: MLM 944W

Bon View New Design 878

Bon View Gammer 85

DOB:2/09/09

Spur Beretta 703G

MLM MISS 417P

MLM MISS IRON SPOT 7100G

EPDs	CE	BW	WW	YW	MK	TM	GL	CEd	SC	ST	CW	RE	MB	DfF	CV	FM
Ind.	103	1.1	43	89	24	46	-1.2	104	.3		12	.16	.07	7.3	22.84	27.04
		BW	WW	YW	Yr. Scrotal Circ			Yr. Pelvic Area		Gain Test	Base Price					
Act.		94	737	1,205	39.0			198		3.12	\$1,800					
Adj.		Adj. Rib Fat		Adj. Rib Eye Area			Adj. % IM Fat									
		.17		13.7			4.77									



Tenderness 5
 Marbling 7
 Percent choice 7
 Yield grade 6
 Ribeye area 5

- 1/2 Gelbvieh, 1/2 Angus
- Homozygous black, multiple polled
- Another New Design 878 son out of a Dam of Merit dam
- *Ratio of 110 at weaning and 102 at yearling
- One of the highest marbling bulls

Yearling Bulls

942W Gelbvieh MR 942W

Homozygous Black Polled Purebred GV

FHG VVFG FLYING H EXCLUSIVE

Tattoo: MLM 942W

OZZ EXT GOVENOR 3N

OZZ CHA MICHELL 74L

DOB:2/08/09

BTI EXTRA 2106K ET

MLM MISS 652S

MLM MISS EDITION 808H

EPDs	CE	BW	WW	YW	MK	TM	GL	CEd	SC	ST	CW	RE	MB	DfF	CV	FM
Ind.	108	-1.1	43	73	21	43	-5	106	.6		5	.05	.04	3.1	8.07	3.73
		BW	WW	YW	Yr. Scrotal Circ			Yr. Pelvic Area		Gain Test	Base Price					
Act.		78	703	1096	39.7			172		2.56	\$1,800					
Adj.		Adj. Rib Fat		Adj. Rib Eye Area			Adj. % IM Fat									
		.16		12.9			3.21									



Tenderness 4
 Marbling 7
 Percent choice 7
 Yield grade 7
 Ribeye area 5

- Purebred Gelbvieh son of Govenor
- Homozygous black, multiple polled
- A calving ease bull that should work on heifers
- * 3/4 brother to Lot 933

945W Gelbvieh MR 945W

Red Polled Purebred GV

JDPD ROLEX 151M

Tattoo: MLM 945W

JDPD ASTRO 407S

HAD PRINCESS OF ALOT 407P

DOB:2/09/09

S LC FREEDOM 178F ET

MLM MISS 211M

MLM MISS BELL 359C

EPDs	CE	BW	WW	YW	MK	TM	GL	CEd	SC	ST	CW	RE	MB	DfF	CV	FM
Ind.	102	1.3	39	69	17	37	-3.0	104	.3		6	.05	-.12	2.5	-3.75	2.77
		BW	WW	YW	Yr. Scrotal Circ			Yr. Pelvic Area		Gain Test	Base Price					
Act.		92	654	1143	37.5			171		3.17	\$1,800					
Adj.		Adj. Rib Fat		Adj. Rib Eye Area			Adj. % IM Fat									
		.19		14.2			2.94									



Tenderness 4
 Marbling 6
 Percent choice 6
 Yield grade 6
 Ribeye area 4

- Purebred Gelbvieh
- Red, double polled
- If you're looking for a red purebred Gelbvieh herd sire, these Astro sons would be hard to beat

943W Gelbvieh MR 943W

Black Polled Balancer® 50AN, 50GV

B/R New Design 036

Tattoo: MLM 943W

Bon View New Design 878

Bon View Gammer 85

DOB: 2/09/09

BTI CHECKMATE 2211C ET

MLM MISS MATE 748G

MLM MISS BELL 283B

EPDs	CE	BW	WW	YW	MK	TM	GL	CEd	SC	ST	CW	RE	MB	DfF	CV	FM
Ind.	103	1.0	37	77	21	40	-.3	104	.3		7	.08	.16	7.6	33.53	16.67
		BW	WW	YW	Yr. Scrotal Circ			Yr. Pelvic Area		Gain Test	Base Price					
Act.		90	617	1123	39.5			169		3.15	\$1,800					
Adj.		Adj. Rib Fat		Adj. Rib Eye Area			Adj. % IM Fat									
		.19		12.7			3.96									



Tenderness 5
 Marbling 6
 Percent choice 6
 Yield grade 5
 Ribeye area 6

- 1/2 Gelbvieh, 1/2 Angus
- Double black, double polled
- The New Design 878 sons stand out
- Dam has a 364 day calving interval on her first 10 calves

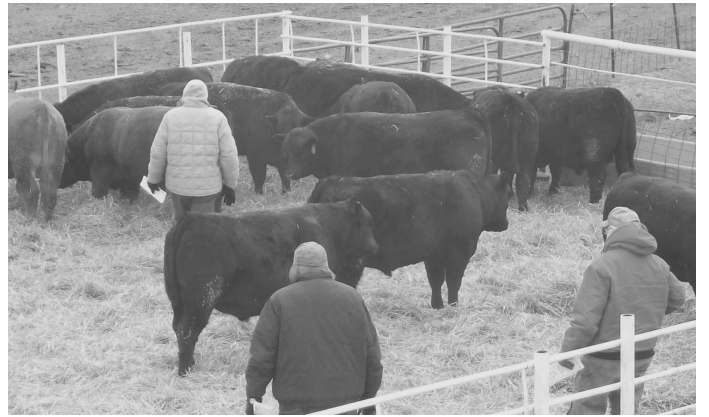
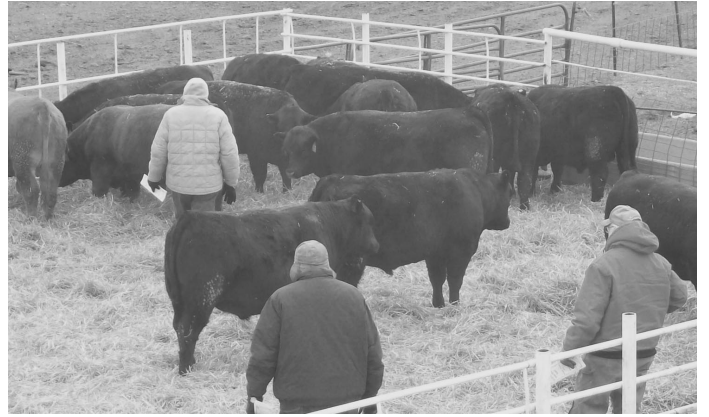
2

0

0

9

SA



LE